



Large Capacity Scrap Operation Electric Arc Furnace Electric Aluminum Furnace

Our Product Introduction

for more products please visit us on newarrivals2025.com

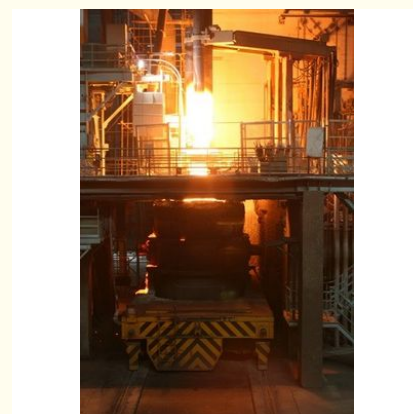
Basic Information

- Place of Origin: CHINA
- Brand Name: OEM
- Certification: CE Certification
- Model Number: OEM
- Minimum Order Quantity: Negotiable
- Price: Negotiable
- Packaging Details: Carton, pallet, wooden case or according to customer's package requirements
- Delivery Time: 30 working days
- Payment Terms: 30% deposit + 70% T/T before shipping
- Supply Ability: 20 sets per month

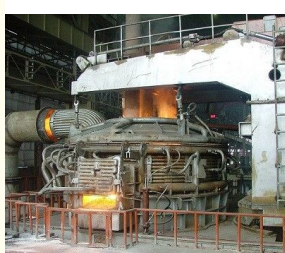


Product Specification

- Type 1: EAF & LF
- Type 2: 100% Scrap Operation
- Type 3: Part-scrap Part-molten Steel Operation
- Type 4: DRI
- Type 5: Scrap
- Type 6: Hot Metal
- Highlight: **direct arc electric furnace, submerged electric arc furnace**



More Images



Product Description

Electric Arc Furnace 100% scrap operation part-scrap part-molten steel operation

Electrode arms for furnace

Product Description

specification

1. The electric arm inlet and outlet water pipe sizes should be designed to meet the water feed and retrning. It can be used with water-cooling cables in series according to customer's requirement.
2. The minimum size listed in electrode distribuion drawing is the minimum size the device can offer.
3. The new-designed arc furnace and ladle furnace can be provided with electric arm on customer's requirement.

Feature

Used for all kinds of furnace.
Excellent quality with competitive price.

When place an order you should provide:

1. Max arm length and L1 size
2. Central distance B between stands
3. electrode diameter and electrode distribution size
4. Electrode arm weight before change if as water -cooling, the cooling water weight should be included
5. Arm and electrode stand connection type and sizes
6. Actual usable pressure of air, water weight should be included
7. Cpmpound plate material: copper and steel, alumum and steel

SN	Parts Name	Qty	Remark
1	Middle phase arm body	1 set	Copper clad steel plate
2	Side phase arm body (left & right)	2 sets	Copper clad steel plate
3	Electrode clamping device	3 sets	Spring disc clamping
4	Electrode clamp	3 sets	Material: stainless steel
5	Electrode contact shoe	3 sets	Forged red copper (Cu99.9%)
6	Insulating part	3 sets	Material: Epoxy glass cloth laminated board
7	Connecting piece	3 sets	Between arm and column



Jinan Yinghua Outdoor Equipment Co., Ltd.



+8618812345678



Puooedr@maoyt.com



newarrivals2025.com

Room 402.Dongbao Building,No.19 Dongbao Road,Chaoyang,Beijing 201613,China