



## Electrode Arc Melting Furnace For EAF LF RF

Our Product Introduction

### Basic Information

- Place of Origin: CHINA
- Brand Name: OEM
- Certification: CE Certification
- Model Number: OEM
- Minimum Order Quantity: Negotiable
- Price: Negotiable
- Packaging Details: Carton, pallet, wooden case or according to customer's package requirements
- Delivery Time: 30 working days
- Payment Terms: 30% deposit + 70% T/T before shipping
- Supply Ability: 20 sets per month



### Product Specification

- Type 1: Contacting Pad
- Type 2: Contact Block
- Type 3: Copper
- Type 4: EAF
- Type 5: LF
- Type 6: VOF
- Highlight: eaf electric arc furnace,  
direct arc electric furnace

for more products please visit us on [newarrivals2025.com](http://newarrivals2025.com)

## Product Description

Electric Arc Furnace contacting block pad electrode clamping unit

Application:

This product found its application in the following industries

Steel Plants ( EAF, LF Etc.)

Ferro Alloy Plants

Calcium carbide Plants

Furnace manufacturers etc.

DESIGN CRITERIA:

HIGH RELIABILITY, MINIMIZE EXISTING MODIFICATION, OPTIMIZE ENERGY SAVING.

NUMBER of EACH ELECTRODE ARM: 1 SET (PHASE 1,2,3,)

EACH ELECTRODE ARM TYPE:

Water Cooled Rectangular Box Type

: Steel Plate Inside And Copper Plate Outside.

These Plate Are Welded Together By A Special "Explosion" Welding Process.

BODY COMPLETE WITH:

- Copper Plates For Connecting The Water-Cooled Power Cables.
- Copper Heads For Connecting The Contact Plate Of The Electrode Clamp.
- Connections For Cooling Water And Hydraulic Fluid For Clamp Opening Cylinder.
- The Main Body Of Lateral Electrode Arm Forms An Elbow In The Front So As To Minimize The Diameter Of The Electrode Pitch Circle.
- The Main Body Of The Central Electrode Arm Is Suitably Shaped In Height To Achieve The Triangulation Phase.
- Water Cooled Copper Contact Plate To Feed The Current To The Electrode.
- Water Cooled Electrode Clamping Band Made Of Welded Non Magnetic Steel Plate,And Complete With Electrical Insulated Shaped Skids For Clamping The Electrode.

Electrode Locking And Clamp Opening Device Consisting Of:

- Simple Acting Cylinder For Clamping Opening.
- Package Of Disk Spring To Lock The Electrode Against The Contact Plate.
- Rod To Actuate The Electrode Clamping Band.

Set Of Insulating Materials For The Electrical Insulation Between Rod And Electrode Clamping Band.

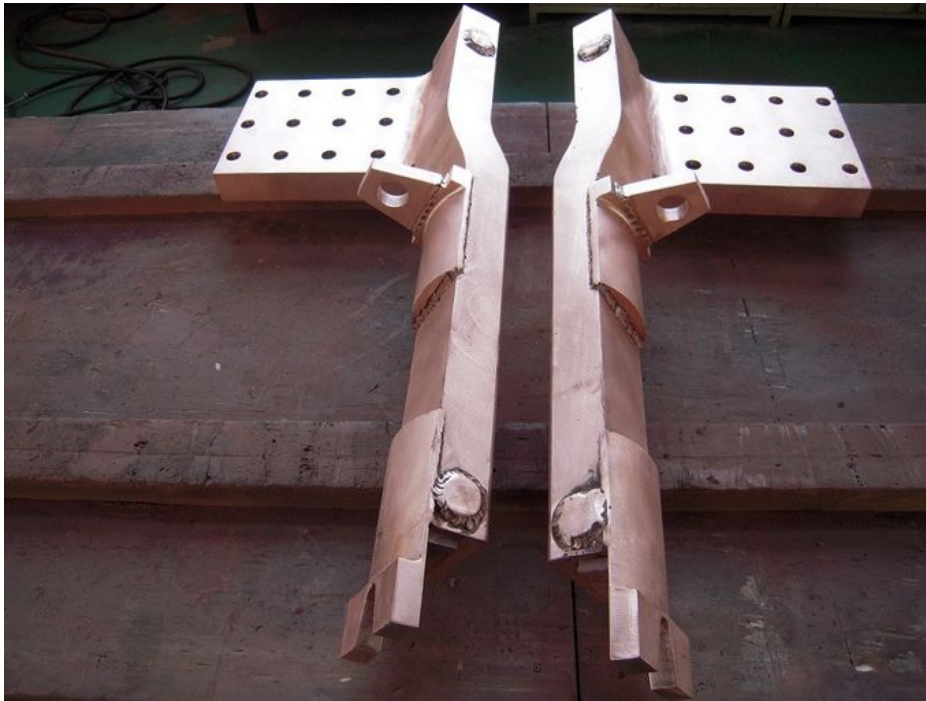
Set Of Material For Electrical Insulation Of :

Electrode Arm From The Head Of The Electrode Lifting Column.

Electrode Skids From Clamping Band.

Set Of Hoses And Pipe For Cooling Water And Hydraulic

Electrode Dia. mm	Electrode Distribution Circle Dia mm	Transformer		Refere nce EAF Ton	Arm cross sectio n H×W mm	Electrode releasing cylinder pressure Mpa/medium	Water cooling	
		Rated curre nt KVA	Seconda ry current KVA				Consump tion M3/h	Connect ing pipe
Φ300	Φ620-Φ800	3200	7.7	5	430×260	5/water base 0.4/Air	8	G1/2"
Φ350	Φ700-Φ950	5500-8000	12.2-17.7	10	430×260	5/water base 0.4/Air	8	G1/2"
Φ350-Φ400	Φ800-Φ1120	8000	17.715	15	450×260	5/oil,water base	10	G3/4"
Φ400	Φ800-Φ1150	9000-12500	17.32-26.7	20	500×360	5/oil,water base	14	G3/4"



**VIKING** Jinan Yinghua Outdoor Equipment Co., Ltd.

+8618812345678

Puooedr@maoyt.com

newarrivals2025.com

Room 402.Dongbao Building,No.19 Dongbao Road,Chaoyang,Beijing 201613,China