

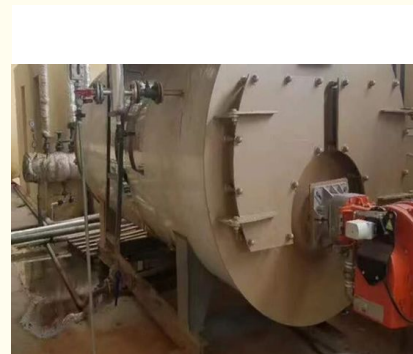


Advanced Oil Fired Hot Water Boiler , Water Boiler System Three Pass Tube

Our Product Introduction

Basic Information

- Place of Origin: CHINA
- Brand Name: OEM
- Certification: CE Certification
- Model Number: OEM
- Minimum Order Quantity: Negotiable
- Price: Negotiable
- Packaging Details: Carton, pallet, wooden case or according to customer's package requirements
- Delivery Time: 30 working days
- Payment Terms: 30% deposit + 70% T/T before shipping
- Supply Ability: 20 sets per month



Product Specification

- Working Pressure: 0 MPa
- Efficiency: 96%
- Fuel: Gas&oil
- Dimension: Depends
- Warranty: 2 Years
- Color: Customization
- Style: Horizontal
- Usage: Industrial
- Highlight: oil steam boiler, hot water wood boiler

for more products please visit us on newarrivals2025.com

Product Description

Product Discription

Series Pressure Horizontal Oil Fired Hot Water Boiler

series pressure horizontal oil & gas fired hot water boiler is fast loading structure, internal combustion, three-pass fire tube boiler, use wet back structure, high temperature flue gas scour second-pass and third-pass fire tubes one after another, and then discharge into atmosphere from back smoke box and condenser, chimney. Boiler equip with mobile front and back smoke box cover, convenient maintenance.

Product Features

1. Reasonable design: Horizontal internal combustion three-return full wet back structure, water-in-fire design, wavy furnace gallbladder, with good expansibility. It has sufficient heating area and reasonable structure layout.
2. High efficiency and energy saving: corrugated furnace gallbladder, threaded flue gas pipe, large space combustion chamber with reasonable structure layout, in order to achieve low energy consumption. With high efficiency of heat transfer, the thermal efficiency of the boiler can reach more than 96%.
3. Manufacturing Specification: Each component of the boiler is manufactured in accordance with the national and international standards (ISO).
4. Greater water flow: The boiler has a large volume of water that handles fluctuations in the load and variation of the peak value to make the operating conditions stable.
5. Longevity and durability: Professional design of boilers and strict quality control are the guarantee of the quality of every Yuji boilers. The service life of the boilers used is more than 20 years.
6. Easy maintenance: front and rear movable smoke box doors, rear inspection holes can enter the furnace for inspection and cleaning. Opening Manhole in Ontology. Head holes and hand holes, structural design fully considers future maintenance.

Technical Parameters

Main Technical Parameters of Series Pressure Hot Water Boilers

Rated Heat Efficiency		MW	0.35	0.7	1.4		4.2	7	10.5	14
Rated Working Pressure		MPa	0.7	1.0	1.0	1.0	1.0	1.0	1.0	1.25
Rated Effluent temperature		°C	95	95	115	115	115	115	115	115
Return water temperature		°C	70	70	70	70	70	70	70	70
Efficiency		/	>96%							
Design Fuel		/	Natural gas, liquid gas, city gas, light oil							
Fuel Theoretic al consumption	gas	NM3/h	37	74	146	288	434	729	1080	1450
	Liquid gas	Kg/h	29	58	116	232	350	586	869	1149
	City Gas	NM3/h	79	157	305	603	943	1572	2347	3141
	Light Oil	Kg/h	31	62	119	237	357	602	903	1203
	Natural gas	mbar	70-100	100-150	100-150	150-200	150-200	150-200	150-300	150-300
	City gas	mbar	100200	100-200	100-200	150-200	150-200	150-200	150-300	150300
Rated water circulation		M³/h	12	24	26.67	53.33	80	133.33	200	266.67
water capacity		M³	1.1	5.2	6.26	7.19	9	14.1	26.9	35.2

Note: The fuel consumption in the table is calculated by low calorific value of light oil 42915KJ/Kg (10260Kcal/Kg), low calorific value of natural gas 35588KJ/NM3 (8500Kcal/NM3), low calorific value of liquefied gas 45998KJ/Kg (11000Kcal/Kg), low calorific value of urban gas 16750K/NM3 (4000Kcal/NM3).

Configuration and Interface Dimensions of Series Pressure Hot Water Boilers

Host transport dimensions (length * width * height)	/	mm	2949*147	3198*186	4131*242	4928*260	5401*265	6280*317	7804*354	9120*440
Host Weight	/	t	2.8	5	8	10.5	17.8	19	35	48

Outlet Valve Diameter	DN	mm	50	65	100	125	125	200	200	200
Backwater Valve Diameter	DN	mm	50	65	100	125	125	200	200	200
Atmospheric Connecting Pipe Diameter	DN	mm	40	50	2,40	2*50	2,65	2,80	2*100	2*150
Drainage Valve Diameter	DN	mm	40	40	2*40	2*40	2,40	2*40	2*50	2*50
Chimney diameter	DN	mm	250	280	350	400	600	750	1000	1100

Note: Due to the continuous updating of products, the company reserves the right to modify the data in the above two tables.



Jinan Yinghua Outdoor Equipment Co., Ltd.



+8618812345678



Puooedr@maoyt.com



newarrivals2025.com

Room 402.Dongbao Building,No.19 Dongbao Road,Chaoyang,Beijing 201613,China