

Low Pressure Gas Water Heater Boiler Natural Circulation Convenient Easy Maintain

Our Product Introduction

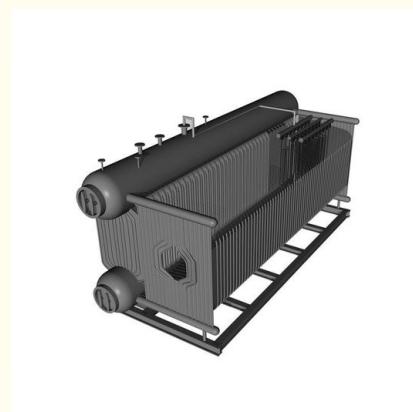
Basic Information

- Place of Origin: CHINA
- Brand Name: OEM
- Certification: CE Certification
- Model Number: OEM
- Minimum Order Quantity: Negotiable
- Price: Negotiable
- Packaging Details: Carton, pallet, wooden case or according to customer's package requirements
- Delivery Time: 30 working days
- Payment Terms: 30% deposit + 70% T/T before shipping
- Supply Ability: 20 sets per month



Product Specification

- Product Name: Automatic Industrial Low Pressure Natural Gas Fired Hot Water Boiler
- Certification: ISO CE
- Output: Steam
- Type: Natural Circulation
- Design Fuel: Gas Oil
- Dimension(l*w*h): Depends
- Boiler Weight: Depedends
- Pressure: 1.0/1.25/1.6MPa
- Highlight: oil steam boiler, hot water wood boiler



Product Description

Product Description

Series Double Drum Oil and Gas Fired hot water Boiler

Fuel hot water boilers in Series Double pot drums are installed vertically with D-type arrangement and quickly into water pipes. The boilers and gas grooves in this series consist of rolling, membrane wall, convection pipe and condenser, which fuel in boilers and gas in convection pipes. It is discharged into chimney and equipped with waste heat recovery device. It adopts Mechatronics structure and has the leading performance in China.

Product Feature

1. Advanced Control System:

Automatic control, users can only press the operation button and the boiler settings can be executed. Load control and automatic water supply are all automatic operations to meet the user's requirements.

2. In line with environmental protection requirements:

Furnace area is vast, high quality imported fuel can be fully fueled, harmful ingredients in acting are greatly reduced, and relevant departments should meet the strictest environmental protection requirements of national gas-fired boilers. According to the survey, it meets the national environmental protection requirements.

3. Applicable fuels:

Furnace area is large and fuel is fully burned. It is especially suitable for low temperature fuels, coke oven gas, furnace gas, etc. Combustion effect of high heat fuels and natural gas, liquefied gas, etc.

4. The word structure is reasonable:

In front of the boiler, it is convenient to install water wall, fix the combustion period, ensure the water and cooling near the combustion period, and help to eliminate combustion combustion combustion.

5. easy to manage:

Installation of anti-riot doors, fire holes and maintenance doors on boiler walls facilitates the installation of manual work in front and back of boilers.

Technical Parameters

Main technical parameters of series pressure cushion water boilers									
Rated Heat Efficiency	MW	7	105	14	21	29	35	42	46
Rated Working Pressure	MPa	1.0/12 5	1.0/L2 5	1.0/1^ 5	1^5/1. 6	125/L 6	1- 25/1.6	L25/L 6	1.25/1 6
Rated Effluent temperature	°C	115/1 30	115/1 30	115/1 30	115/1 30	115/1 30	115/1 30	115/1 30	115/1 30
Return water temperature	°C	70	70	70	70	70	70	70	70
Efficiency	/	>96%							
Design Fuel	/	Natural gas, liquid gas, city gas, light oil							
		Liquefied gas,							
		City Gas							
		Light oil							
Fuel Theoretical consumption	gas	NM ³ /h	731	1097	1462	2191	3026	3657	4383
	Liquid gas	Kg/h	586	877	1169	1755	2421	2928	3511
	City Gas	NM ³ /h	1572	2354	3138	4705	6503	7839	9149
	Light Oil	Kg/h	599	899	H93	1801	2479	2989	3601
	Natural gas	mbar	150-200	150-300	150-300	150-300	150-300	150-300	150-300
	City gas	mbar	150-200	150-300	150-300	150-300	150-300	150-300	150-300
Rated water circulation	M ³ /h	133/100	200/150	266/200	400/300	551/414	665/500	798/600	874/657

Note: The fuel consumption in the table is calculated by low calorific value of light oil 42915KJ/Kg (10260Kcal/Kg), low calorific value of natural gas 35588KJ/NM³ (8500Kcal/NM³), low calorific value of liquefied gas 45998KJ/Kg (11000Kcal/Kg), low calorific value of urban gas 16750K/NM³ (4000Kcal/NM³).

Configuration and Interface Dimensions of Series Pressure Overlay Boilers

Host transport dimensions (length * width * height)	/	m	563 3*3 340 0	636 5*3 85* 347 8	878 1*3 25. 383	Separate transportation	Separate transportation	Separate transportation	Separate transportation	Separate transportation
Host Weight	/	t	150 /20 0	200	200	300	300	350	350	400
Outlet Valve Diameter	Dm Nm		150 /20 0	200	200	2*200	2*200	2*200	2*200	2*300
Backwater Valve Diameter	Dm Nm		50	50	2*5 0	2*50	2*50	2*50	2*50	2*50
Atmospheric Connecting Pipe Diameter	Dm Nm		750	100 0	110 0	1400	1700	2000	2000	2200

Note: Due to the continuous updating of products, the company reserves the right to modify the data in the above two tables.



Jinan Yinghua Outdoor Equipment Co., Ltd.



+8618812345678



Puooedr@maoyt.com



newarrivals2025.com

Room 402.Dongbao Building,No.19 Dongbao Road,Chaoyang,Beijing 201613,China