

## High Pressure Diesel Fired Steam Boiler

Our Product Introduction

for more products please visit us on [newarrivals2025.com](http://newarrivals2025.com)

### Basic Information

- Place of Origin: CHINA
- Brand Name: OEM
- Certification: CE Certification
- Model Number: OEM
- Minimum Order Quantity: Negotiable
- Price: Negotiable
- Packaging Details: Carton, pallet, wooden case or according to customer's package requirements
- Delivery Time: 30 working days
- Payment Terms: 30% deposit + 70% T/T before shipping
- Supply Ability: 20 sets per month



### Product Specification

- Name: High Pressure Double Barrel Gas Fired Steam Boiler
- Steam Capacity: 10-65kg
- Working Pressure: 1.25/1.6MPa
- Steam Temperature: 193/204
- Feed Watetr Temperature: 104
- Efficiency: 96%
- Dimension: Depends
- Weight: Depends
- Highlight: **natural gas steam boiler, lpg fired steam boiler**

## Product Description

## Product Discription

## Double Drum Oil and Gas Fired Steam Boiler

double drum oil & gas fired steam boiler is double drum, longitudinal type D-form layout, fast loading water tube boiler. This series of boilers are made of upper boiler drum and lower boiler drum, membrane wall, convection tubes and condenser, the fuel was burning in boiler furnace, flue gas discharge into chimney from convection tubes and waste heat recovery device. By using mechatronic structure, the performance being in the leading domestic level.

## Product Features

## 1. Wide Variety of Applicable Fuel:

Large furnace area, fuel burning fully, particularly suitable for low calorific value fuels, such as coke oven gas, blast furnace gas etc. The burning effect of high calorific value fuels are much better, such as natural gas, liquefied gas etc.

## 2. With overload Capacity:

Large heating area, large furnace area, strong output, with a certain overload capacity.

## 3. Reasonable Structure:

Set front water wall at front of boiler furnace, convenient for fixing the head of burner, to ensure the water degree and cooling near the burner, contribute to eliminate the carbon deposition of burner, so that the fuel can combust more.

## 4. Easy Maintenance:

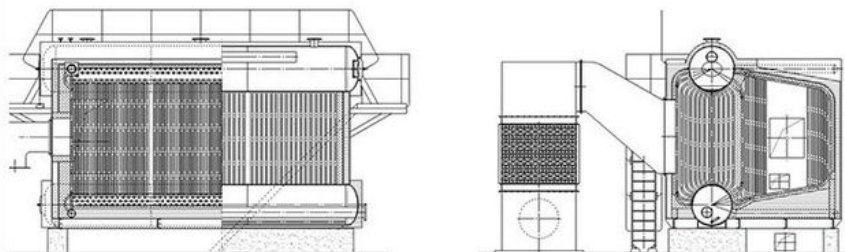
Set explosion door, fire hole and inspection door on boiler furnace wall, set manhole at front and back of boiler barrel, convenient for maintenance boiler.

## 5. Reduce Heat Loss:

Use thick insulation layer, reduce boiler heat loss, and increase the thermal efficiency.

## 6. Long Life and Durable:

Excellent professional design, advanced production processes, strict quality inspection control, is the quality assurance of each boiler, the service life of normal use boiler all above 20 years.



## Technical Parameters

## Main Parameters of Oil &amp; Gas Fired Steam Boiler

Steam Capacity		t/h	10	15	20	25	35	50	65
Working Pressure		MPa	1.25/1.6	1.25/1.6	1.25/1.6	1.25/1.6	1.25/1.6	1.6/2.5	1.6/2.5
Steam Temperature			193/204	193/204	193/204	193/204	193/204	204/226	204/226
Feed Water Temperature			104	104	104	104	104	104	104
Thermal Efficiency		/	≥98%						
Fuel		/	Natural Gas, Liquefied Gas, City Gas, Light Oil						
Fuel Consumption	Natural Gas	NM <sup>3</sup> /h	733	1098	1464	1829	2559	3662	4769
	Liquefied Gas	Kg/h	588	883	1173	1469	2053	2937	3823
	City Gas	NM <sup>3</sup> /h	1573	2362	3143	3945	5503	7877	10222
	Light Oil	Kg/h	601	898	1197	1496	2093	2997	3893
Gas Inlet Pressure	Natural Gas	Mbar	150-200	150-300	150-300	150-300	150-300	150-300	150-300
	City Gas	Mbar	150-200	150-300	150-300	150-300	150-300	150-300	150-30

Remarks: The fuel consumption in above table are counted the low calorific value of light oil as 42915 KJ/Kg(10260Kcal/Kg),

the low calorific value of natural gas as 35588 KJ/NM3(8500Kcal/NM3), the low calorific value of liquefied oil as 45998 KJ/Kg(11000Kcal/Kg), the low calorific value of city gas as 16750 KJ/NM3(4000Kcal/NM3).

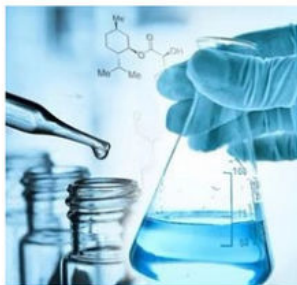
Transport Dimension	L	mm	5633	6365	6665	Separated	Separated	Separated	Separated
	W	mm	3300	3585	3585	Transport	Transport	Transport	Transport
	H	mm	3400	3478	3850				
Main Steam Valve Pipe Diameter	DN	mm	150	150	200	200	250	2×150	2×150
Feed Water Valve	DN	mm	50	65	65	80	100	125	125
Drain Valve Pipe Diameter	DN	mm	40	40	50	50	50	50	50
Chimney Diameter	DN	mm	750	1000	1100	1300	1500	2000	2000

External and Interface Dimension of SZS Series Oil & Gas Fired Steam Boiler

Remarks: We will reserve rights to change the above mentioned data due to continuous policy transformation and product improvement.

## Application

### Application



**Chemical Industry:** polyreaction, condensation reaction, distillation, rectification, concentration, evaporation, fusion.



**Oil and Grease Industry:** grease decomposition, deodorization, fatty acid distillation, hydrogenation reaction, esterification.



**Petrochemical Industry:** synthesis reaction, heating storage tank, heating heavy oil, thermal insulation.



**Food Industry:** food baking



**Air Condition Industry:** heat source of central air condition.

**VIKING® Jinan Yinghua Outdoor Equipment Co., Ltd.**

+8618812345678

Puooedr@maoyt.com

newarrivals2025.com

Room 402.Dongbao Building,No.19 Dongbao Road,Chaoyang,Beijing 201613,China